

تكنو فاب
TECHNO FAB
الهندسية ENGINEERING



COMPANY PROFILE
&
BROCHURE

CONTENTS

Introduction

Commitment

Vision

Mission

Management

Management Chart

Products

Projects

Regional Presence

Sister Companies



INTRODUCTION

TECHNO FAB Engineering (TFE) was established in 2003 with the prime focus of offering designing, testing and manufacturing quality, reliable and affordable products for facilities equipped with centralized air conditioning systems.

COMMITMENT

TFE is committed to a policy of maximizing customer satisfaction and strives to achieve excellence through ongoing research and development; and sale of reliable, cost effective and quality products and services.

Our business procedures, workflows and practices comply with the requirements of ISO9001:2000 Quality Management Systems.



MISSION

- Lead the market in finding and introducing new technologies.
- Develop close and ongoing business relationships with our clients in order to meet our main objectives of providing high quality products and customer service.
- Add value to our customers and exceed their expectations through our research and development; process integration and expertise.
- Employ the finest people in their field, utilize the most contemporary technologies and develop a culture that fosters individual growth within a system that ensures consistent results with a focus on quality and service.
- Build a well established & reliable enterprise customer base.
- Be customer oriented.



“Our vision

serves as the framework

for our Roadmap and guides every aspect of our business by describing what we need to accomplish in order to continue achieving sustainable, quality growth.”



“Our Roadmap

starts with our mission, which is enduring. It declares our purpose as a company and serves as the standard against which we

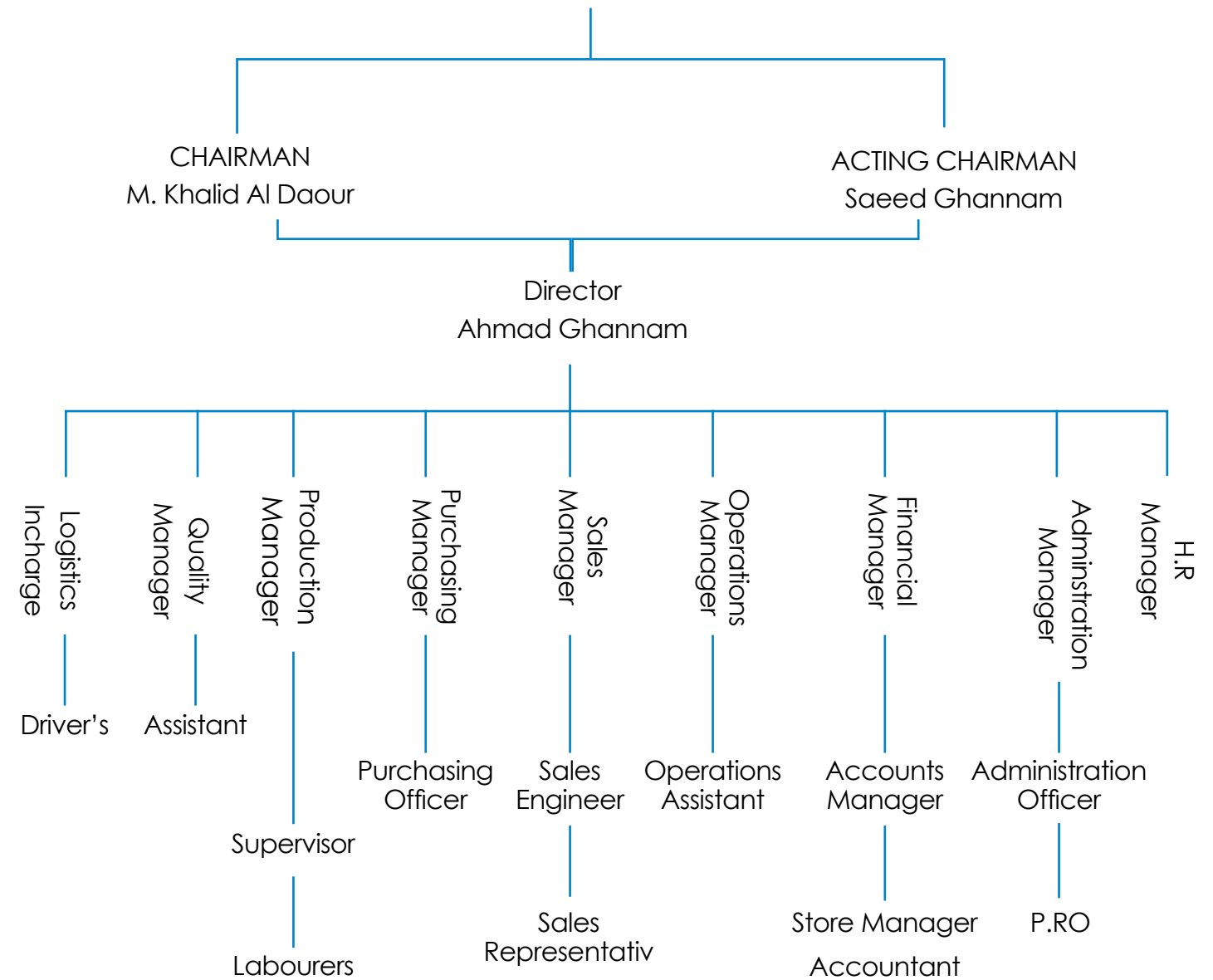


MANAGEMENT

TFE was founded upon a solid managerial and technical background. The company is jointly owned and managed by Mr. Mohd Khalid Al-Daour (a professional Electrical Engineer), Mr. Saeed Ghannam, (a professional Mechanical Engineer) and Mr. Ahmad Ghannam as a Master of Planning and Strategic Management.



Techno Fab Engineering



➔ **“Management**
is doing things right; leadership
is doing the right things.”



➔ **“Outstanding leaders go**
out of their way to boost
the self-esteem of their
personnel. If people believe
in themselves, it's amazing what
they can accomplish.”



PRODUCTS

Our range of product offering includes the entire related products to the air terminals industry. We focus on serving different types of terminal devices to fulfill general atmospheric conditions, safety and security requirements and aesthetic and architectural demands.

We offer guaranteed quality Grilles, Decorative Grilles, Register, Linear Diffuser, Ceiling Diffusers, Sand Trap Louvers, Fresh Air Louvers, Non Return Dampers, Volume

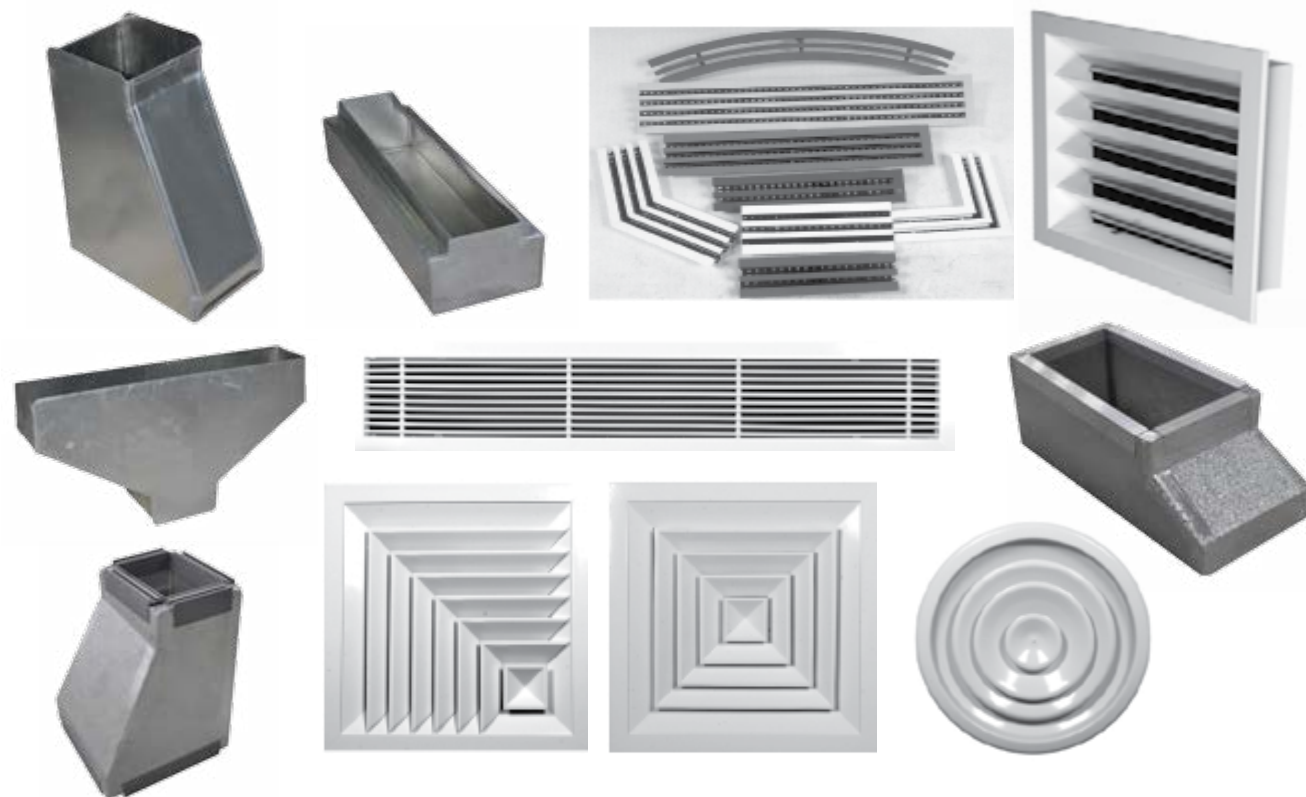
Dampers, and many more. Our clients include operators and owners of private, commercial and industrial facilities where air quality is of paramount importance like airport terminals (including VIP lounges), villas, private offices, meeting rooms, towers, shopping malls.

Beside the air terminals products, we supply all ducts material (G.I Duct, P.I Duct, S.T Duct, Round Duct, Spiral Duct, Fire Rated Duct & Black Steel Duct).



TFE invested in the best machinery available in the field, to build products that meet international standards. Our manufacturing stream is consisted of experienced qualified craftsmen, product managers and

assembly line supervisors. Our step-up ensures delivery on time and quality as promised. The manufacturing structure is planned to adopt the fluctuations and changes in any factors of the project lifecycle.



PROJECTS

Over the years, TFE has commissioned and delivered a myriad of projects, to the total satisfaction of our clients.

Years	TOWERS	BUILDINGS	MALLS	B. CENTRES	VILLAS
2008	2	7	0	2	120
2009	7	6	1	3	144
2010	10	18	1	7	195
2011	22	16	3	10	257
2012	19	24	1	1	104
2013	21	31	1	6	222
2014	35	25	2	10	185
2015	28	27	3	9	260
TOTAL	144	154	13	48	1042

REGIONAL PRESENCE

TFE boasts dedicated business operations in GCC countries and sales representatives across the Middle East and India. Our sales team is available round the clock to answer any queries of customers and provide utmost customer satisfaction.

Our exertions generally find no enduring physical correlatives. We are diluted in gigantic intangible collective projects, which leave us wondering what we did last year and, more profoundly, where we have gone and quite what we have amounted to....



"In poorly run projects, problems can go undetected until the project fails. It's like the drip...drip...drip of a leaky underground pipe. Money is being lost, but you don't see it until there is an explosion."

Sister Companies



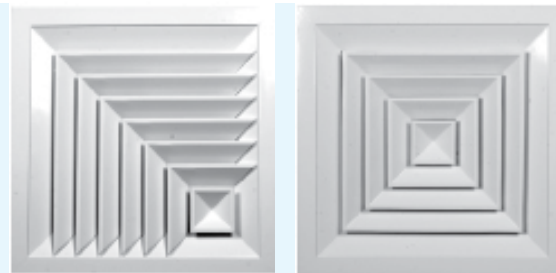
Why TECHNO FAB Engineering ?

Wide Range of Air Outlets Products

TECHNOFAB Engineering supply a wide range of Air Outlets Products for Residential & Commercial Projects. TECHNOFAB Engineering is the Manufactures for all kinds of Air Outlets Products & Accessories in the UAE.

Ceiling Diffusers

- 4WS :4 Way Square Diffuser.
- 3WS :3 Way Square Diffuser.
- 2WS-O : 2 Way Square Diffuser, Opposed Blades.
- 2WS-C : 2 Way Square Diffuser, Comer Blades.
- 1WS :1 Way Square Diffuser.
- 4WR :4 Way Rectangular Diffuser.
- 3WR :3 Way Rectangular Diffuser.
- 2WR-H : 2 Way Rectangular Diffuser, Horizontal Blades.
- 2WR-V : 2 Way Rectangular Diffuser, Vertical Blades.
- 1WR-H : 1 Way Rectangular Diffuser, Horizontal Blades.
- 1WR-V : 1 Way Rectangular Diffuser, Vertical Blades.



All Colors Available



Exhaust & Air Louvers

- Model EAL
- Model EAL + D (Double Frame)
- Model EAL
- Model FAL + D c/w Filter (Double Frame)



All Colors Available



Gravity Louvers & Non Return Dampers

- Model GL
- Model GL-R (Reversed Blades)
- Model NRD•S
- Model NRD•C
- Model NRD•F



All Colors Available



Circular Ceiling Diffusers

- Circular Return Ceiling Diffuser, Model CRCD W/O DAMPER
- Circular Supply Ceiling Diffuser, Model CSCD C/W BFD

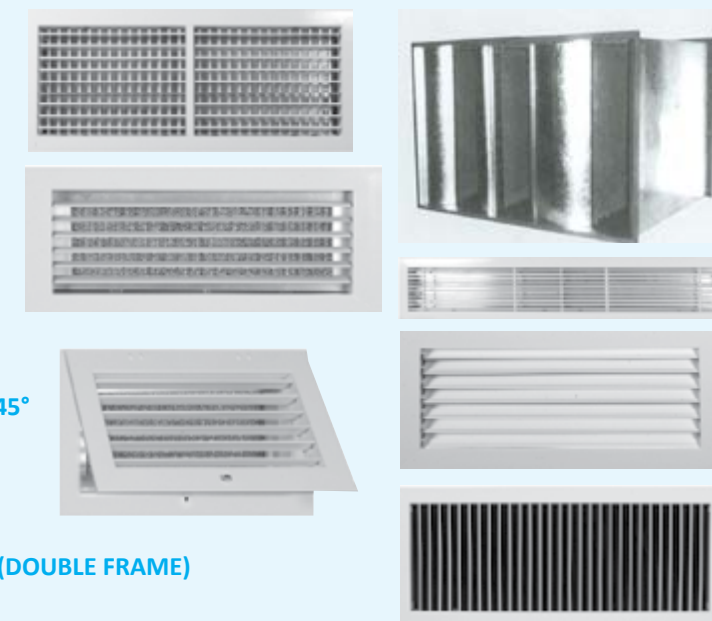


All Colors Available



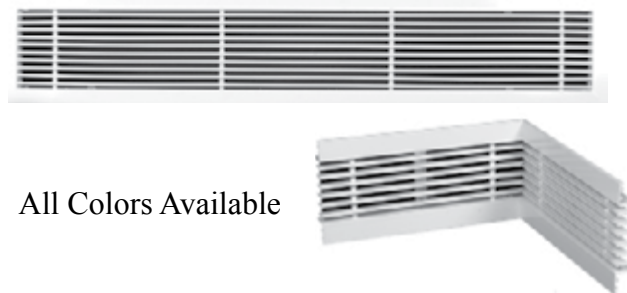
Grilles & Registers

- Model SAR HFB DD
- Model SAG VFB DD
- Model SAG HFB DD
- Model SAG VFB DD
- Model RAR HB SD or EAR HB SD
- Model RAR VB SD or EAR VB SD
- Model RAG HB SD or EAR HB SD
- Model RAG VB SD or EAR VB SD
- Model RAG HB SD or EAR HB SD, Fixed Blades 45°
- Model FAG C/W FILTER
- Model ECG
- Model ECG+D or ECR
- Model ECG+F
- Model FAG + D C/W FILTER or FAR C/W FILTER (DOUBLE FRAME)
- Model FAG C/W FILTER (DOUBLE FRAME)



Linear Bar Grilles & Registers

- Model SLG DD
- Model SLR DD
- Model RLR SD
- Model RLG SD

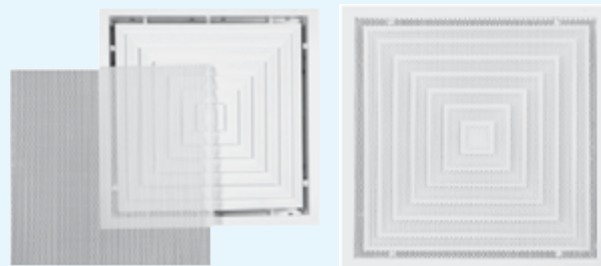


All Colors Available



Perforate Ceiling Diffusers

- Model PSCD4WS, Standard Module 600 X 600 mm Face Size
- Model PSCD4WS, Standard Module 600 X 600 mm Face Size
- Model PSCD4WS, Standard Module 600 X 600 mm Face Size

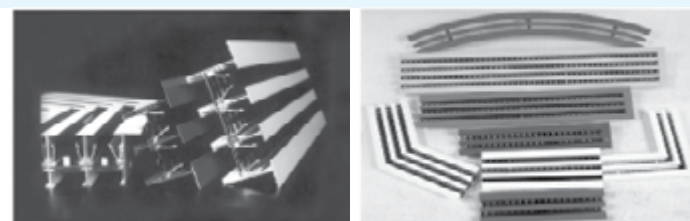


All Colors Available



Linear Diffusers Slot

- Model RLD
- Model SLD
- Model OLD
- Model COM LD
- Model Curve LD
- Model Corner LD



All Colors Available

Door Transfer Grilles

Model DG



Sand Trap Louvers

Model STL
Model STL + F
Model STL + D
Model STL + F + D
Model FSTL



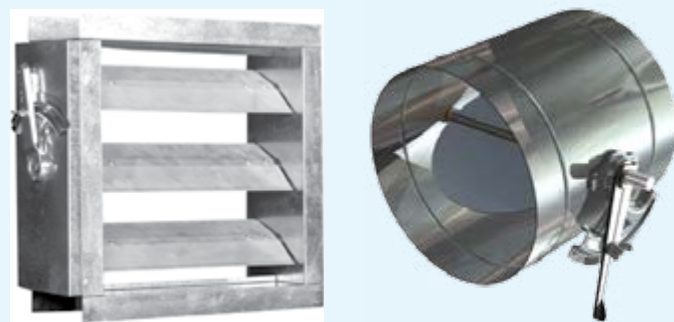
Disc Valves

Supply Disc Valve, Model SUPPLY D.V. METAL
Exhaust Disc Valve, Model EXH. D.V. METAL



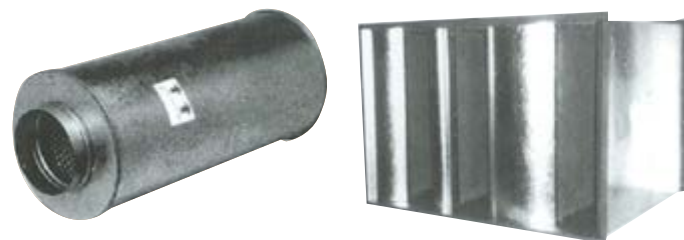
Volume Control Dampers

Model VCD - F1
Model VCD - F2
Model VCD - F3
Model VCD - S1
Model VCD - S2
Model VCD - S3
Model VCD - R



Sound Attenuators

1. AS-S 10 Series, Square and Rectangular Type, Ex: AS - 4D
2. BS-S 20 Series, Square and Rectangular Type, Ex: BS - 48
3. CS-S 30 Series, Cylindrical Type, Ex: CS - S 38
4. CT-S 40 Series, Cross Talk Type, Ex: CT - S 3A



G.I Products

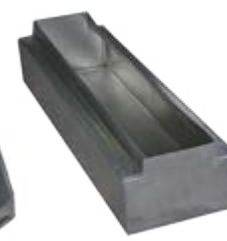
Round Duct

Straight

Taper

Plenum Box

Y . Elbow



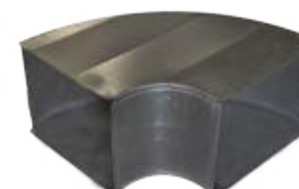
Offset

Elbow

Shoe

Round Square

Y . Branch



P.I Products

Taper

Y . Branch

Straight



Y . Elbow

Elbow

Shoe



تكنو فاب
TECHNO FAB
الهندسية ENGINEERING

Rectangular Duct & Fittings

Description:
Duct Work Manufactured To The Following Specifications :

- SMACNA
- DW142/144

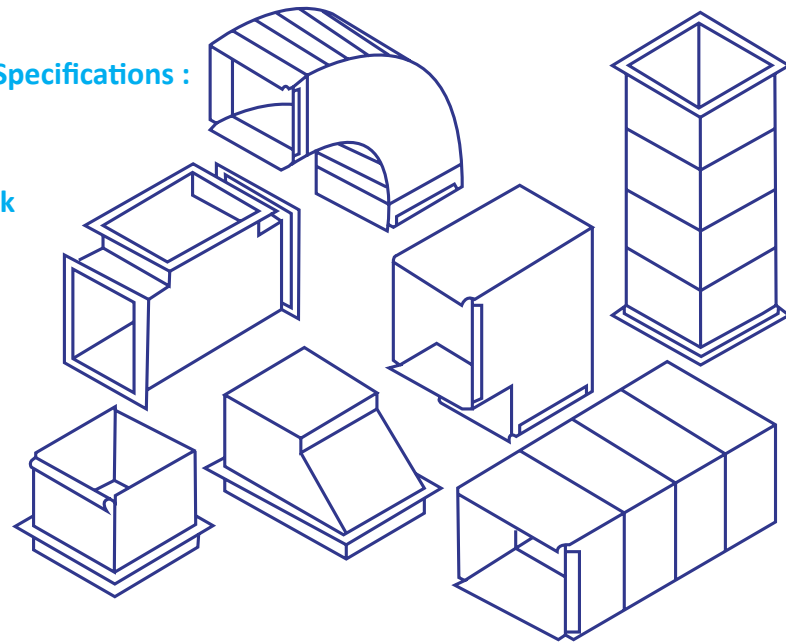
Galvanized Steel To Astm A527/653 Zinc Lock Forming Grade Of G90 / Z 27.

Options:

- Plain End Or Flange
- Black Mild Steel
- Aluminum
- Stainless Steel

Thickness:

- 0.4Mm Thik . Up To 3Mm Thik
- Standerd Straight Length 1200mm



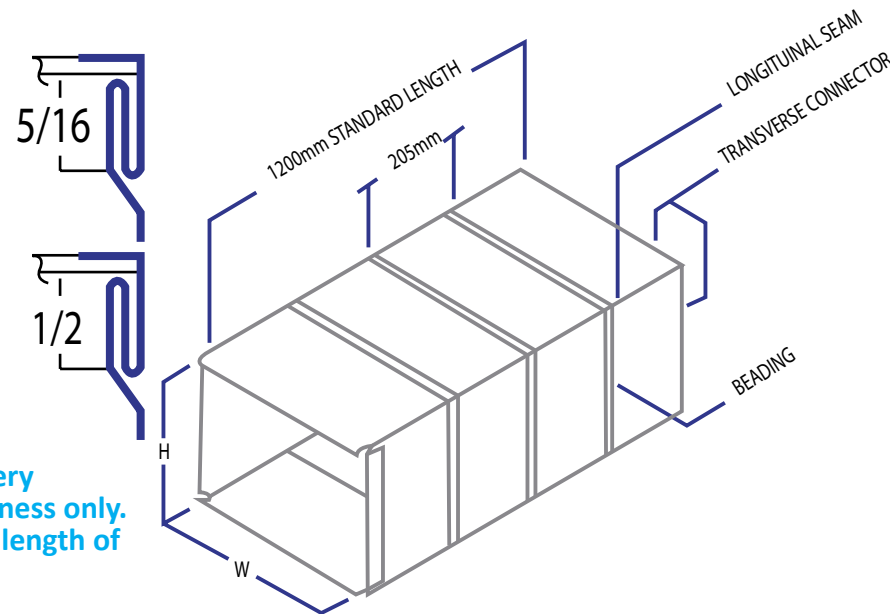
Rectangular Straight

A- SEAM
PITTSBURGHSEAMS
Small PITTSBURGH for 26 to 22 ga

Largest PITTSBURGH for 20 to 18 ga

B- BEADING
BEADING standard distance is at every 305mm interval up to 18ga steel thickness only. beading is only for standard straight length of 1200mm.

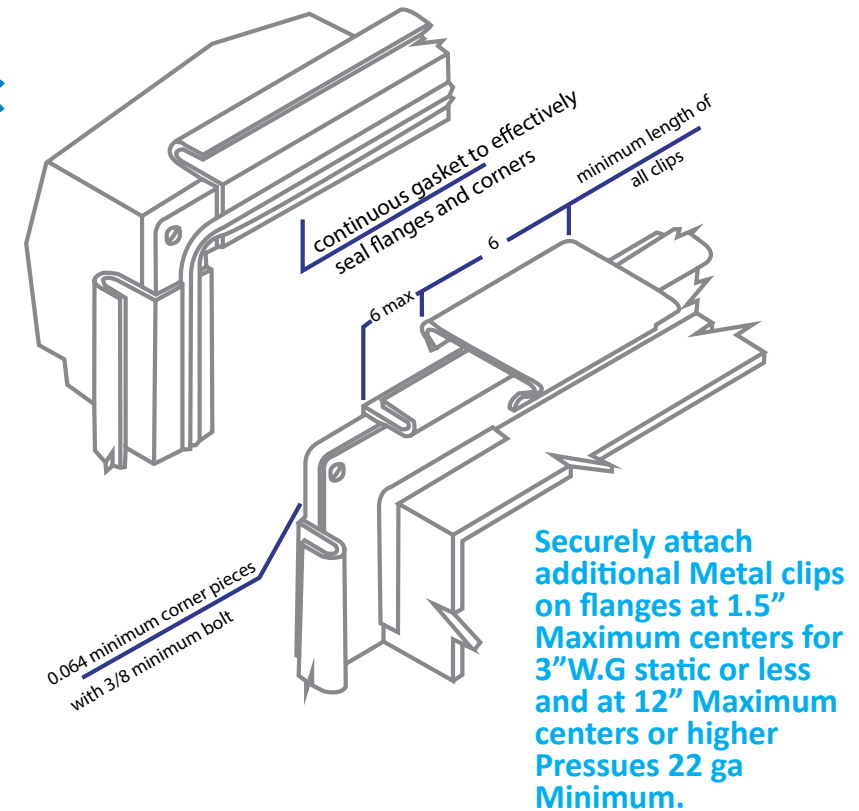
C- CONNECTOR
For Connector Details, Refer To Standard Duct Construction Schedule



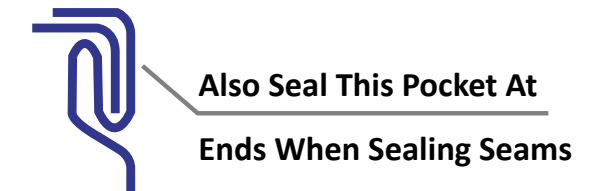
Formed Flange / TDC

Joint t-24, formed flange : mating flanges are formed on the end of the duct in double flange style to create a tee shape when assembled. 0.064" Minimum thickness Steel corner pieces with 3/8 minimum Diameter bolts shall be used to close Corners.

1/4" By 1/2" minimum size gaskets Of suitable density and resiliency shall be continuous around the joint and shall be located to form an effective seal. Mating Flanges shall be locked together by 6" long clips located within 6" of each corner and Also spaced at centers not exceeding 15" of 3" w.G or lees static pressure, nor Exceeding 12" for 4", 6" and 10" w.G.



Longitudinal Seams

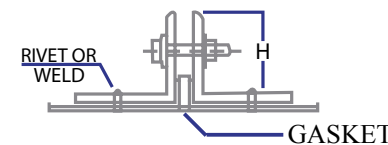


- Pittsburgh lock
Pittsbrgh seam : pocket depth varies From 1/4" to 5/8" depending on Guage of metal and roll form equipmint. The most common sizes are 5/6" and 3/8" Used on straight duct and fitting

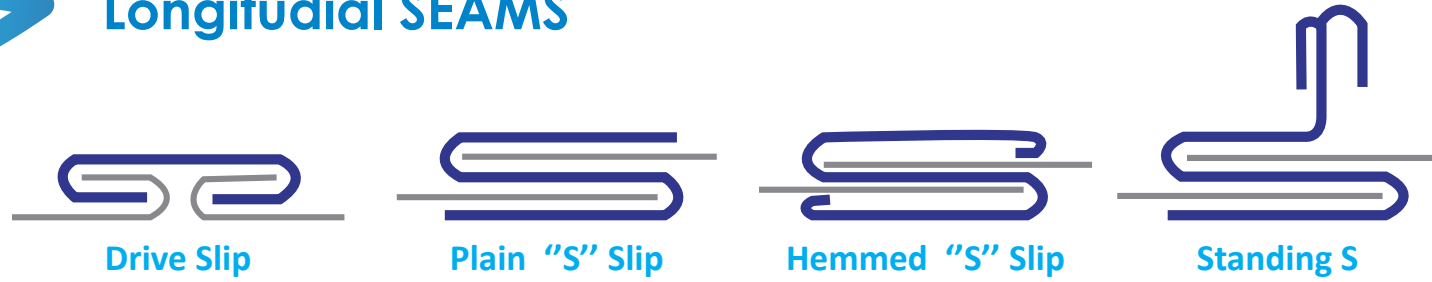
- Grooved seam
Also called flat lock and Pipe lock. type illustrated is Known as pipe lock, flat Lock or grooved seam.

- Standing seam
Unless other wise Required by the application, A1" seam is normally used up to 42" Duct width with 1 1/2" seams For larger ducts, May be used on interior of the Duct with due consideration for Velocity level. Fasten together At ends and 8" intervals.

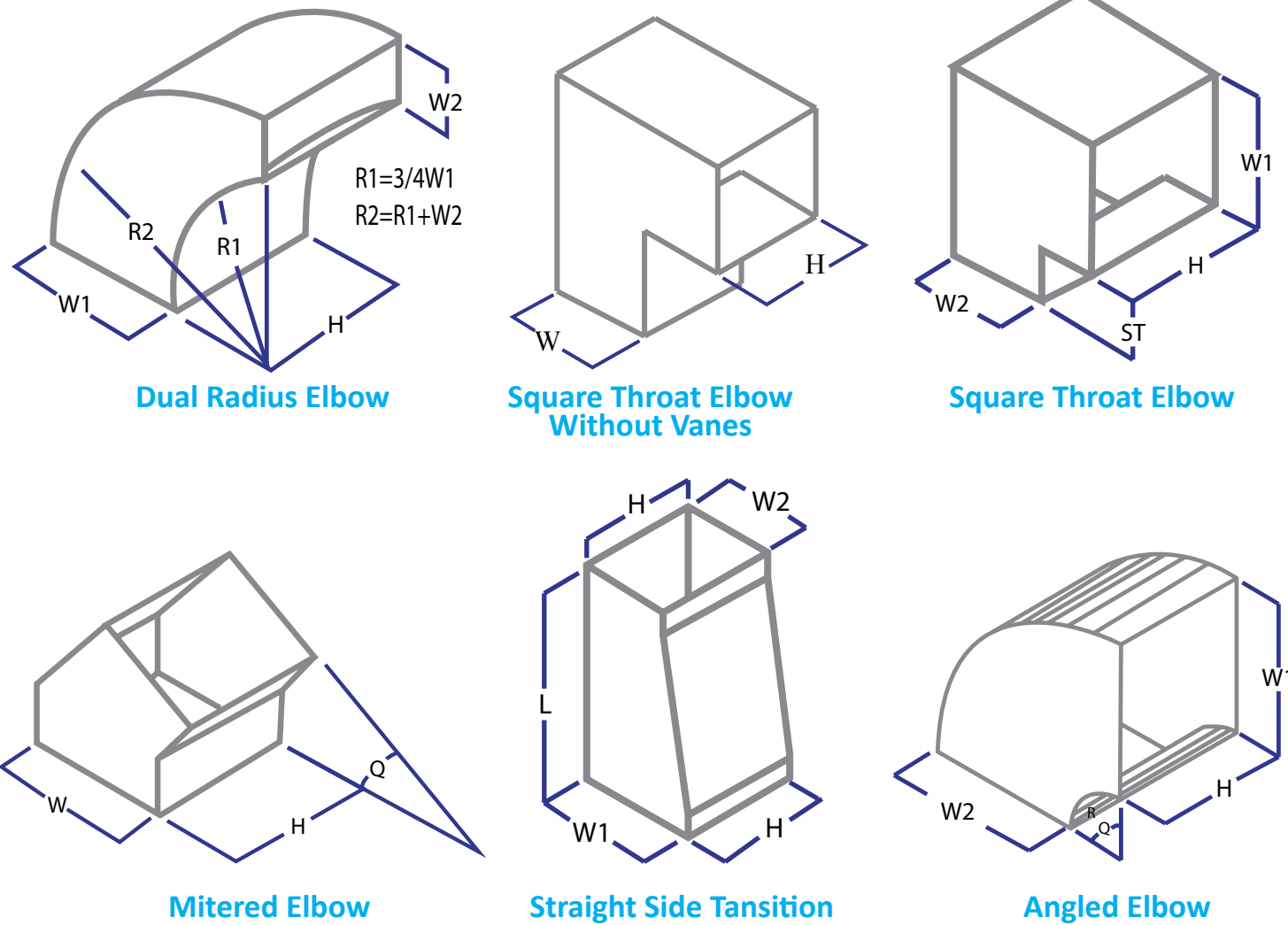
Companion angles (Caulk or gasket)



Longitudinal SEAMS

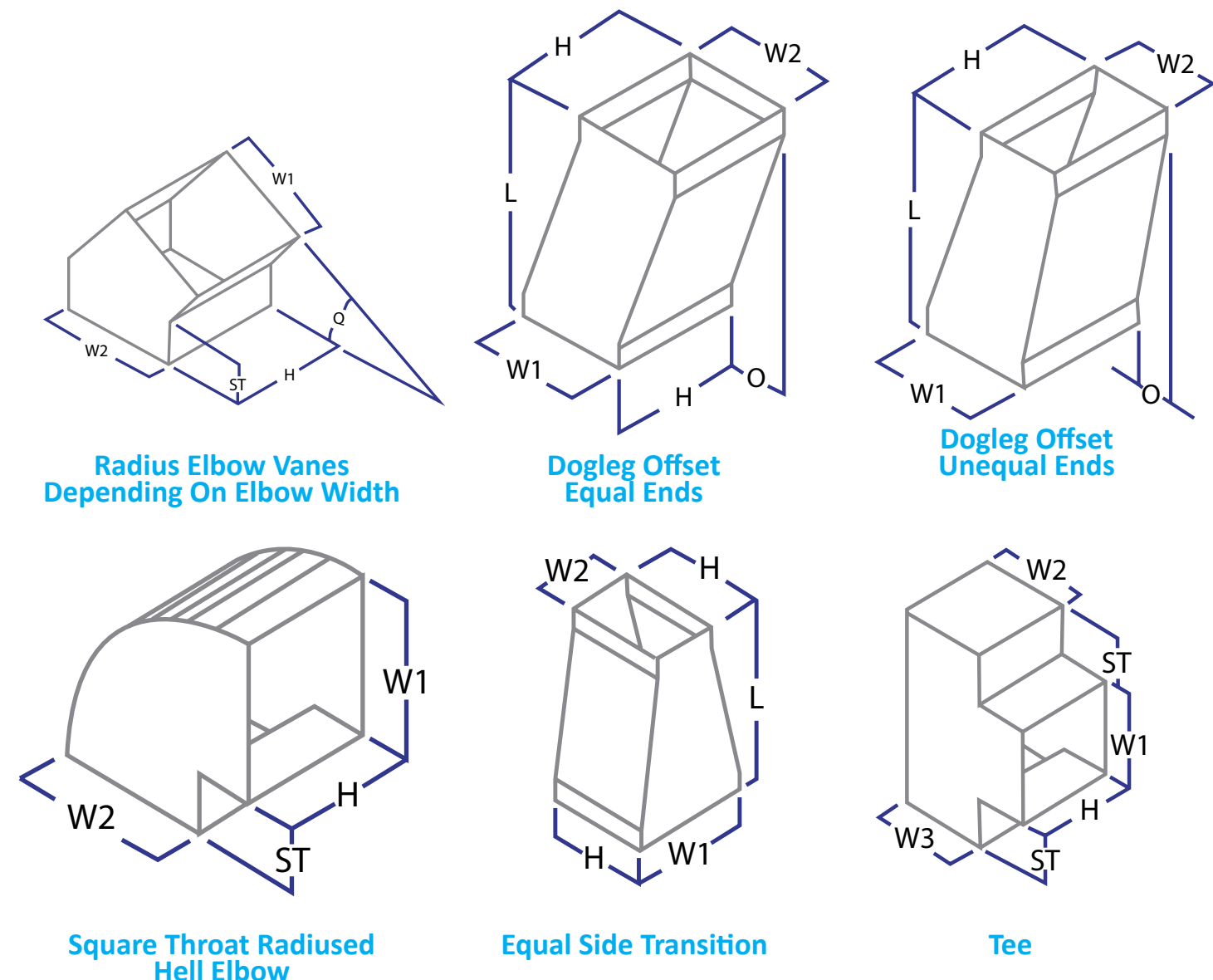


Rectangular Fittings



- W1: Width On End 1 • W2: Width On End 2 • W3: WIDTH ON END 3 • H: Duct Height • St: Square Throat Length
- L: Length • R: Radius Centerline Rod = $3w/2$ STD ROD • Q: Degree • O: Offset
- If (H) On Both Ends Are Not The Same, Indicate Elevation.

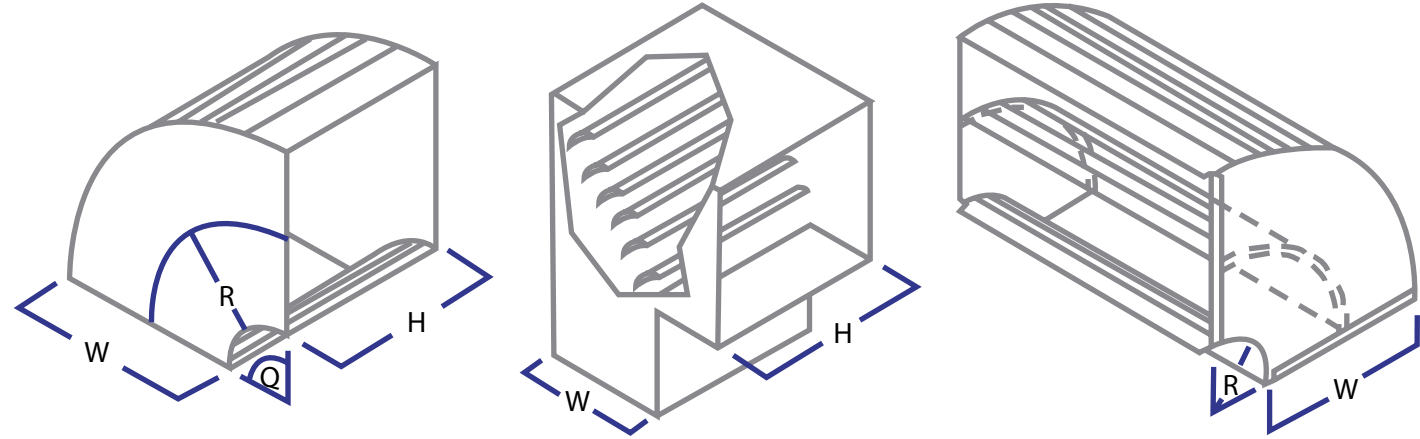
Rectangular Fittings



- W1: Width On End 1 • W2: Width On End 2 • W3: WIDTH ON END 3 • H: Duct Height • St: Square Throat Length
- L: Length • R: Radius Centerline Rod = $3w/2$ STD ROD • Q: Degree • O: Offset
- If (H) On Both Ends Are Not The Same, Indicate Elevation.



Rectangular Elbows



Radius Elbow
(Centerline $R = 3W/2 = \text{STD Radius}$)

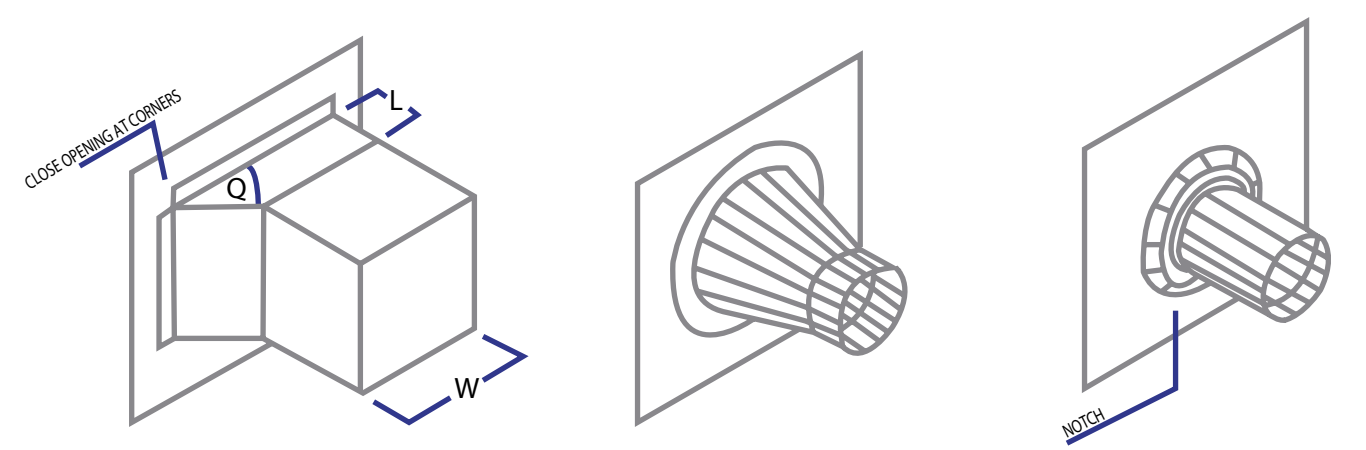
Square Throat
Elbow With Vanes

Short Bends

W=up to 300mm No Splitter
W=over 300mm up to 500mm 1' no Splitter. $3W/2$
W=over 500mm up to 1000mm 3' no splitter ($W/6, W/2$)
W=over 1000mm 3' no splitter ($W/12, W/4, W/2$)
Long Bends - ($R=W$), no splitter Required



Branch Connections



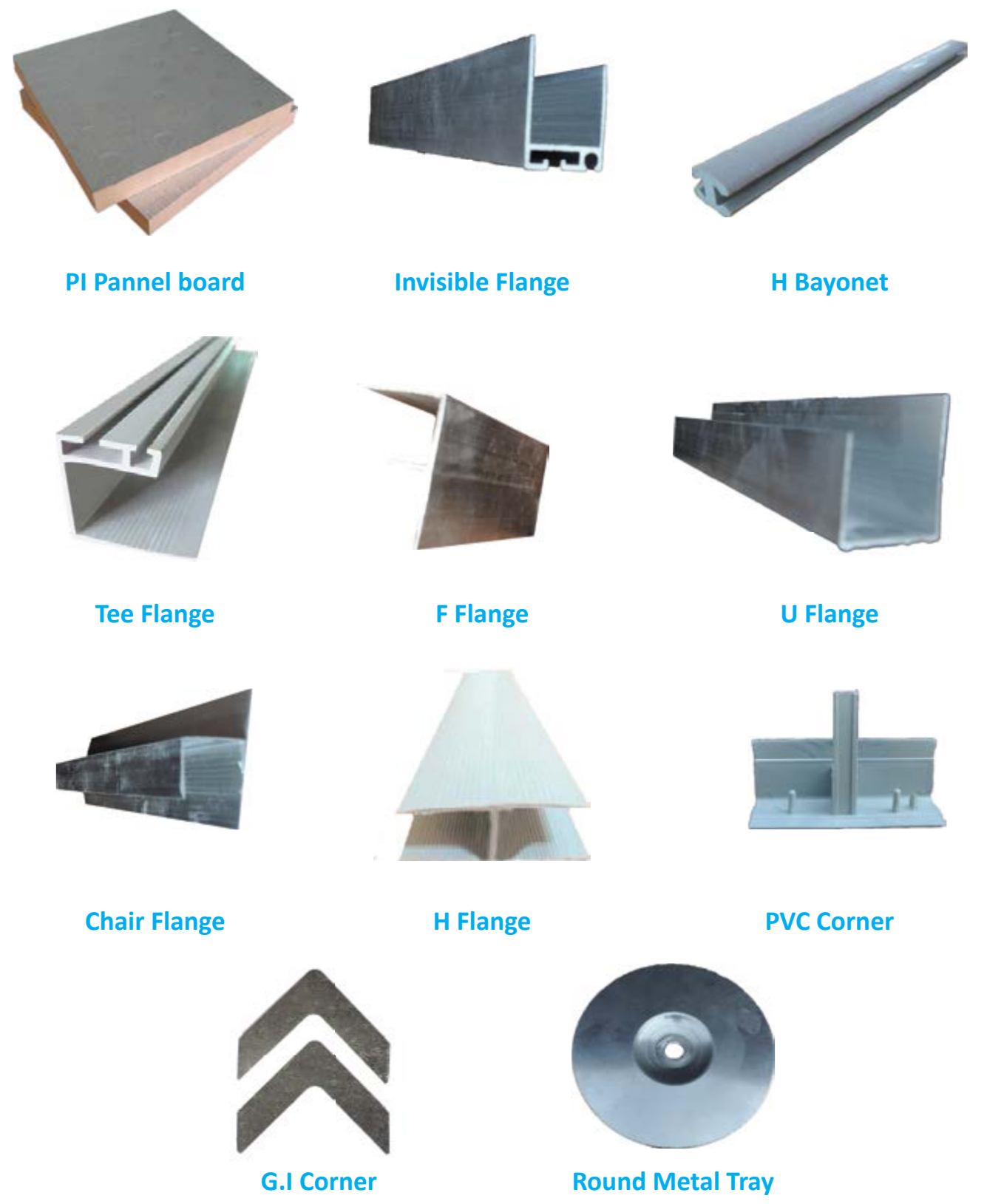
Straight Tap Connection
45 DEGREE ENTRY $Q = 45$
 $L = 1/4W, \text{MIN}$

Conical Tap Connection

Spin In Tap Connection



Pre Insulated Accessories



PI Panel board

Invisible Flange

H Bayonet

Tee Flange

F Flange

U Flange

Chair Flange

H Flange

PVC Corner

G.I Corner

Round Metal Tray



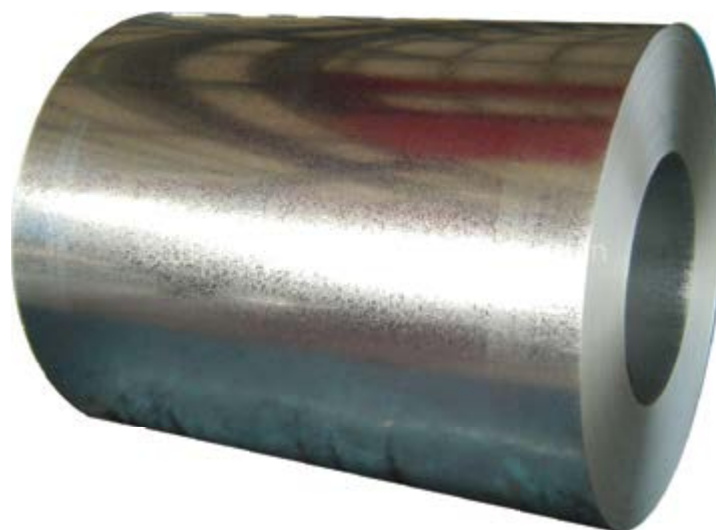
GI Sheets / Coils

Material Specification :

Hot Dip galvanized (HDG) ASTM A 653 / ASTM A 653M
Zinc Coating : G40, G60, G90
Spangle : Zero, Regular, Minimum
Availability : Sheet / Coil

Available Brands

1. NIPPON - JAPAN
2. NISSHIN - JAPAN
3. AGIS - UAE
4. JINDAL - INDIA
5. ESSAR - INDIA
6. TATA - INDIA
7. POSCO - KOREA
8. POSCO - INDIA
9. MITTAL - SOUTH AFRICA



Stainless Steel

Material Specification :

Grade : 200, 304, 316M
Finishing : Mill Finish, Brush Finish
Thickness Range : 0.45 mm - 3.00 mm
Availability : sheet / coil

Available Brands

1. Outokumpu - FINLAND
- China



Aluminium

Material Specification :

Thickness Range : 0.55 mm 1.2 mm
Alloy : 1100
Temper : Mill Finish, Stocko Finish
Finishing : With / Without VC lamination
Availability : Sheet / Coil

Available Brands

1. Hindalco - INDIA
-CHINA



Perforated Galvanized IRON

Material Specification :

Hot Dip Galvanized (HDG)
ASTM 653 / ASTM A 653 M
Zinc Coating : G90 (Z 275)
Thickness Range : 0.7mm, 0.9mm
Hole : 3mm
Pitch : 5mm
Availability : Sheet / Coil



تكنو فاب
TECHNO FAB
الهندسية ENGINEERING

→ Insulated Flexible Duct

TECHNO FAB insulated flexible duct is made of tough polyster, permanently bounded to spring steel wire helix and coloured black thermal efficiency is provide by wrapping the exterior with blanket of fibber glass insulation, the strong outer insualition jacket / vapour barrier is made of metalized polyster film laminate.

Standard Length 25 ft (1pc - 25 ft. per ctn.)
Standard diameters - 4 inch to 18 inch



→ Aluminum Foil Tape

Plain Aluminum foil tape application is for sealing and seaming plain foil/FSK faced fibre glass duct insulation surface. Protection against moister combined with superior sealing and vapour barrier protection.

Length	Width	Roll/Ctn
2 Inch	30Yds	24
3 Inch	30Yds	16
4 Inch	30Yds	12



→ Aluminium Regid Duct

Aluminium Regid Duct is made of soft aluminium sheet and the duct can easily bend and cut in the desired size by using a knife or scissoir.

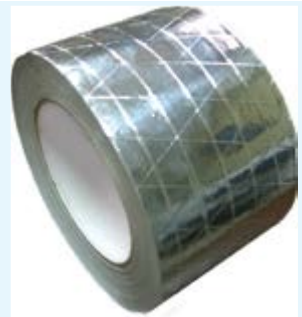
Standard Length 12 ft
Standard diameters - 3 inch to 18 inch



→ Foil Scrim Craft Tape (FSK)

A High quality tape, having an aluminum - rainforced with fiberglass scrim laminated with foil and craft.

Length	Width	Roll/Ctn
2 Inch	30Yds	24
3 Inch	30Yds	16
4 Inch	30Yds	12



→ Non Insulated Flexible Duct

Non Insulated Flexible Duct is made of Lamination of aluminum foil, polyster and metalized polyster films permanently bonded to a coated spring steel wire helix.

Standard Length 25 ft (1pc - 25 ft. per ctn.)
Standard diameters - 4 inch to 18 inch



→ Duct Care 30-36 (Duct Canvas Coating)



→ Flexible Duct Connector

The factory fabricated flexible duct connection well provide for normal vibration swing in large duct systems without short circuiting the effectiveness of the flexible duct connector.

Standard Size:
6.5 inche x 75 ft. / box
6.5 inche x 100 ft. / box
6.5 inche x 150 ft. / box

Metal - 1 3/4 neoprene fabric - 3inch metal - 1 3/4



→ DUCT CARE 81-10 (DUCT ADHESIVE)

Available Qty. : 15 Ltr



→ DUCT CARE - PIR (DUCT PIR GLUE)

Available Qty. : 15 Ltr





Duct Care Rubber Glue

Available Qty. : 5 Ltr. & 2.5 Ltr Tin Can



Duct Sealant (Deu Seal)

Available Qty. : 24 pc in 1 ctn



G Clamp

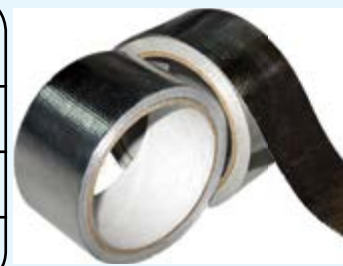
Size : 20 mm to 30 mm



Aluglass Tape

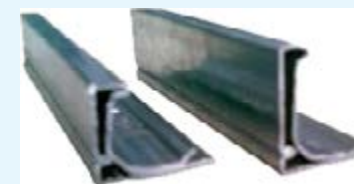
Aluminum glass cloth backing enable thermal insulation tape have good heat and light reflective performance, thermal insulation tape is embossed of aluminum flass cloth bonding high performance flame retardant adhesive with easy release silicon paper.

Length	Width	Roll/Ctn
2 Inch	30Yds	24
3 Inch	30Yds	16
4 Inch	30Yds	12



GI Flange

Size : 20 mm to 40 mm
Standard Length : 5 mtr



Support Channels

Thickness : 2.5 mm



Aluglass Tape

PVC tape used to protect iron & steel pipes from cprrosion, also used to protect PVCpipe from sorrosion due to ultraviolet rays in above the ground installation

Thick	Width	Length	Roll/Ctn
0.15	2"	100 ft.	60
0.18	2"	100 ft.	60



GI Corner

Size :
20 mm to 40 mm



GI Cleats

Size : 20 mm to 40 mm



Foam Tape

This is made of hig quality plasticised PVC foil in combination with an ageing stable solvent based adhestry. it is widely used in HAVAC & constructions industry, mechanical industry usefull as protection sheet to all kinds of general application.

Thick	Width	Length
3mm	1/2"	7.5mtr.
3mm	1"	7.5mtr.
3mm	2"	7.5mtr.



Threaded Rod

Size : 6 mm to 12 mm



Gi Nut & Washer

Size : 6 mm to 12 mm



Duct Cloth Tape

Duct Cloth Tape adopts polythene coated cloth as backing with rubber resin adhesive coated. it enjoys high tensil strength, excellent moisture resistant, easy tear. it confirms well to irregular surface.

Length	Width	Roll/Ctn
2 Inch	30Yds	24
3 Inch	30Yds	16
4 Inch	30Yds	12





Quadrant

QDNT 6, QDNT 8
QDNT 10, QDNT 12



Spring Holder

SHFD 80, SHFD 100



Pvc Square Bush

NBSH 6, NBSH 8
NBSH 10, NBSH 12



Square Spindle

SPDL 10 10 70
SPDL 10 10 80
SPDL 10 10 120
SPDL 12 12 70
SPDL 12 12 80
SPDL 12 12 120



Cam Lock

SMLKS

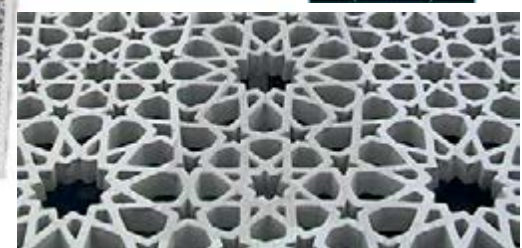


Aluminium Blade

ALB 100
ALB 150



Decorative Grilles





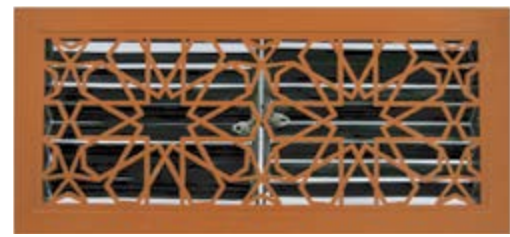
→ Your Luxury Our Intrest

Techno Fab Engineering has been working to deliver certain standards and high quality aspects in the products that we provide to our customers. Our innovation thinking has always yielded us high quality products and in the end , highly satisfied customers.

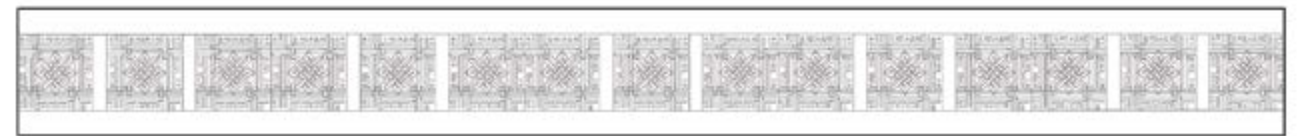
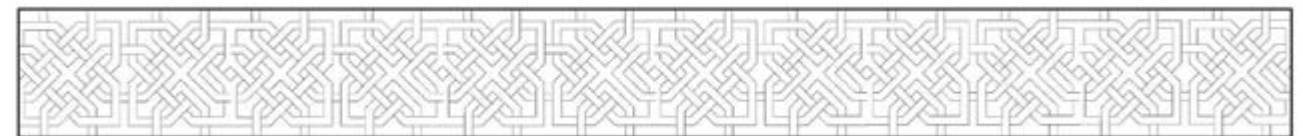
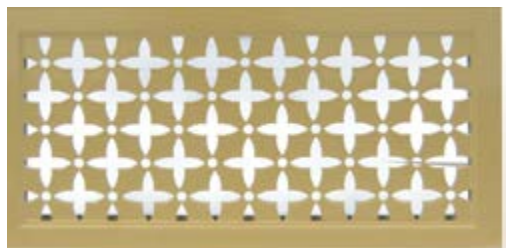


→ Decorative Grilles

Are made to add more uniqueness to your villa, office or commercial building. We provide you with various designs to choose from



Decorative Grilles can be customized and designed upon the customer's desire. We can even plot your picture on a square diffuser. You can have Holy Quran verses on linear air terminals or any other text. Our Decorative Grilles can meet all industry standards on quality; assuring our customers of their desired quality and beautiful decorative views.

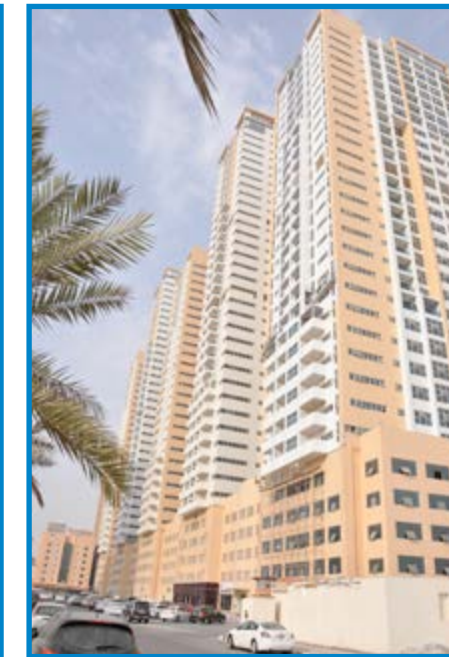
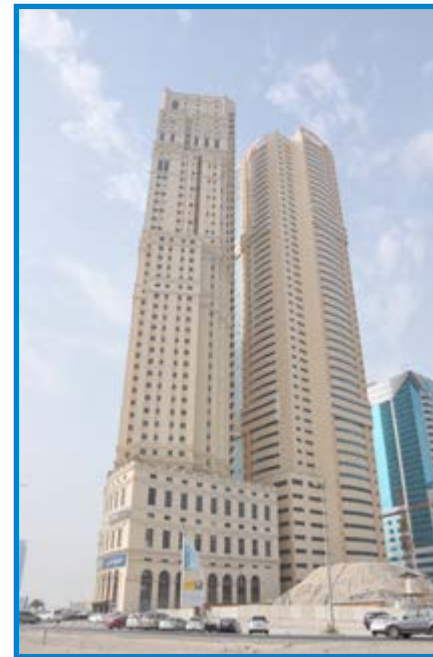




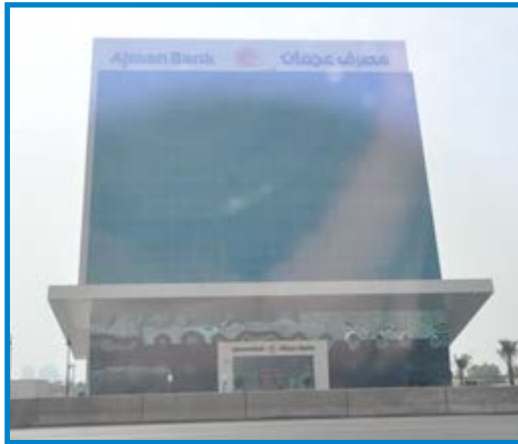
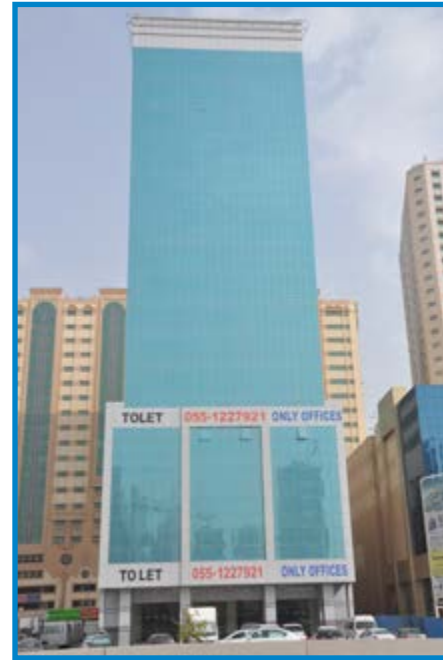
تكنو فاب
TECHNO FAB
الهندسية ENGINEERING

Project Gallery

→ Projects Gallery



➔ Projects Gallery

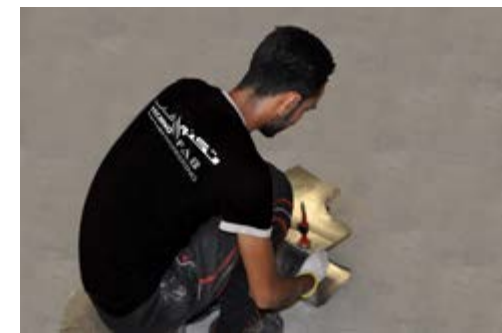




تكنو فاب
TECHNO FAB
الهندسية ENGINEERING

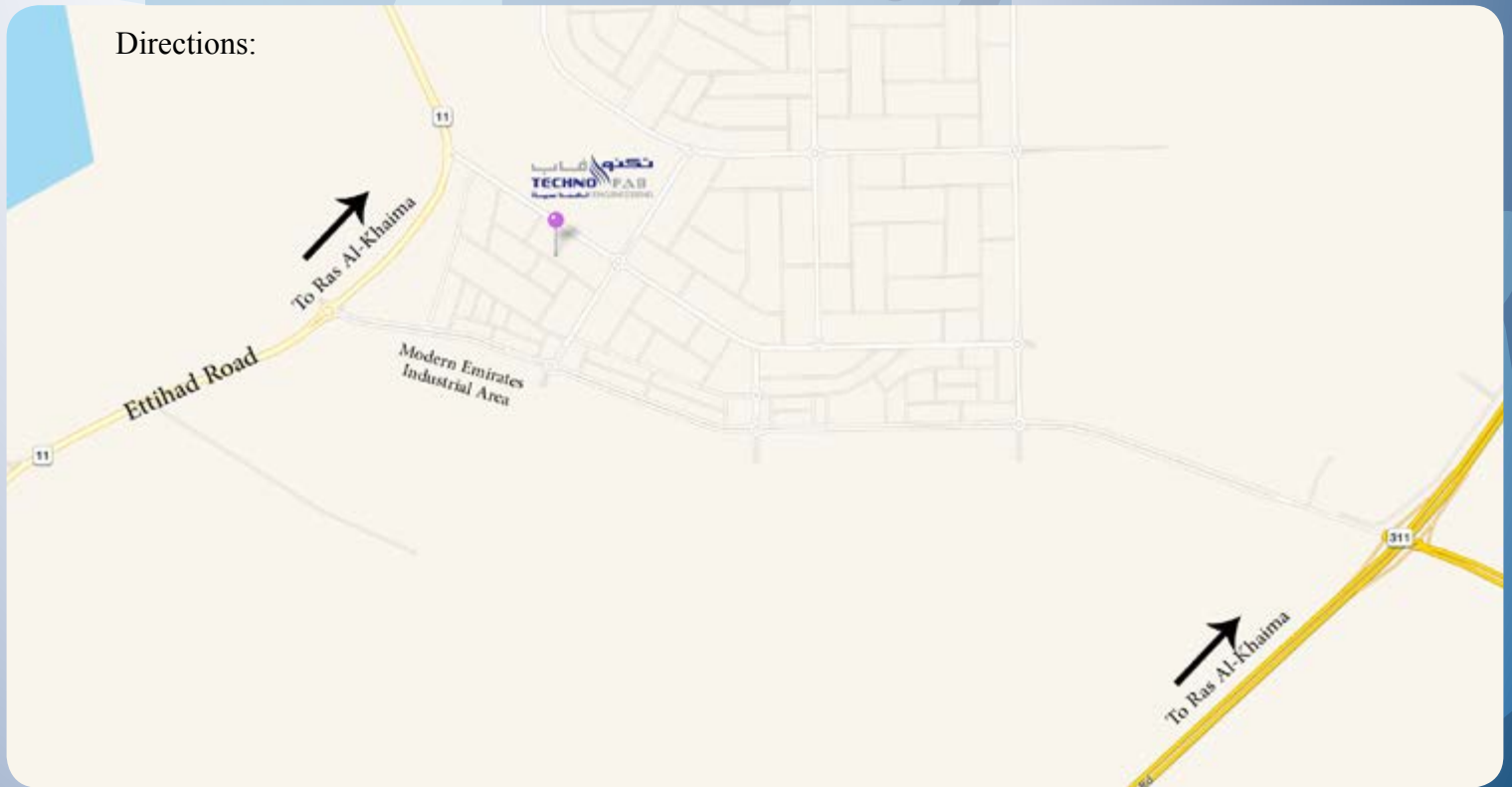
Industry Gallery

→ Industry Gallery



تكنو فاب
TECHNO FAB
الهندسية ENGINEERING

Directions:



CONTACT US

TECHNO FAB Engineering Head Office
United Arab Emirates
P. O. Box: 326900, UAQ, UAE
Tel : +971 6 7670 726
Fax : +971 6 7670 725
Email: info@technofab-eng.com
Web: www.technofab-eng.com